

SAFE DISPOSAL ...

Cooking Fat:

Allow the fat to cool and solidify, then scrape it out, wrap it in newspaper or tin foil and dispose of it in your trash bin. Alternatively, pour it into a plastic container and when it has cooled dispose of it in your trash bin.

Sanitary napkins, tampons and panty liners:

Wrap item well and put dispose of them in your trash bin. Special disposal bags are available at some pharmacies and supermarkets. In public restrooms, please place items in the sanitary bins provided.

Condoms, and used bandages:

Wrap items well and dispose of them in your trash bin.

Diapers, liners and wipes:

Wrap items well and dispose of in your trash bin. Diaper disposal bags are available at supermarkets and pharmacies.

Razor blades:

To avoid injury, place used blades in a solid container *before* putting them in the trash bin.

Medicines:

Return all unused medicines to your pharmacy for proper disposal. Always keep medicines out of reach of children, even when disposed of.

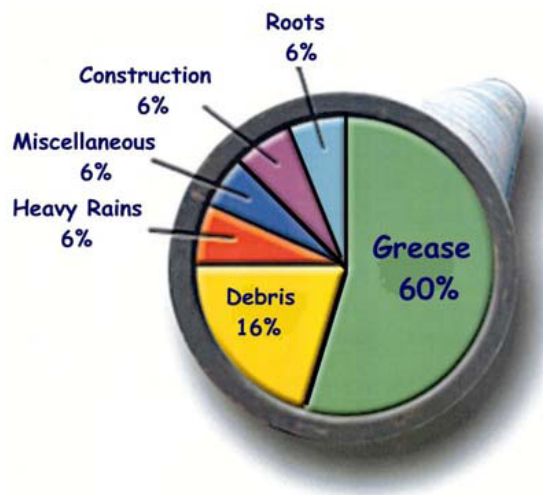
Used syringes and needles:

Needles and syringes should be taken to your nearest disposal bank. (Your doctor or pharmacy should be able to tell you where to find it.)

Other liquids:

Contact your local council for details of

Causes of Residential Sewer Blockages



DEPARTMENT OF PUBLIC WORKS

2828 Allouez Avenue
Green Bay, WI 54311

Phone: 920-468-5225

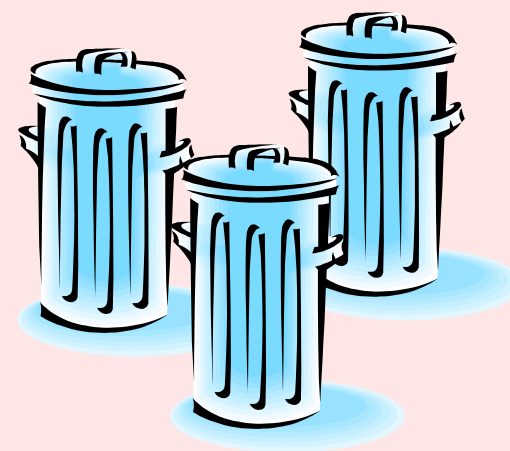
Fax:

E-mail: billb@villageofbellevue.org

VILLAGE OF
BELLEVUE
DEPARTMENT OF PUBLIC WORKS

TRASH IT...

DON'T FLUSH IT!!!



Trash It, Don't Flush It!

What are the risks:

Something to Ponder:

Our area's sewage treatment facilities municipal pumping systems are constantly being overwhelmed with items they are not equipped to handle effectively. These facilities and pumps are only designed to treat and deal with human waste and toilet tissue.

Improper or inconsiderate disposal of sanitary items, diapers, etc. into our sewer system can cause serious problems, including flooding in your home, or someone else's. Additional maintenance and repairs to the sewer system increases the monthly sewer usage rates for the user.

Please do not flush:

- Disposable Diapers
- Baby/Cleaning Wipes
- Contraception Devices
- Tooth Brushes
- Colostomy Bags
- Plasters
- Medicines
- Dental Floss
- Toilet Bowl Scrub Pads
- Liners
- Razors
- Cotton Balls, Q-Tips
- Contact Lenses
- Used Bandages
- Syringes/Needles
- Tights
- Cigarette Butts

Domestic sewage pipes are typically only 4 inches in diameter, and when these pipes are mis-used, sewer blockages will occur, therefore reducing the efficiency of the system and adding to the problem of sewage outflow from the system. This type of situation can put many homes at risk for sewage flooding, and at risk for polluting our local waters.

Unfortunately, our homes are constantly at risk for flooding from improper disposal of personal items, such as sanitary napkins, diapers, condoms, grease and fat into the drains and sewer system. Sewage flooding also presents a health risk to humans and wildlife, as well as looking unsightly.

When drains and sewers are mis-used this way, we all pay the price for cleaning the sewers, removal of blockages, pump repairs, and cleaning up the rivers, homes and land affected by sewer flooding.

Please do not pour down drain:

- Grease
- Kitchen Fat
- Paint
- Engine Oil
- Household/Gardening Chemicals

Most fat that is poured down the drain is in liquid form, but when it hits the cold pipes underground, it tends to harden on the walls of the pipes as it moves through.

A popular myth is that running hot water down the drain will prevent this from occurring, but the ground surrounding the pipe keeps it cool, allowing the fat to cling to the walls of the pipe. Over a period of weeks or months, the fat will harden within the pipes, eventually causing the pipe to become completely blocked. Sometimes, these blockages can cause sewage to discharge into a river or stream, which is a threat to our environment.

You can help prevent these sewage floods by disposing of sanitary napkins, diapers, contraception devices, grease and fat with your local waste collection facility and not into drains or flushed down commodes.

